

## Supporting Information

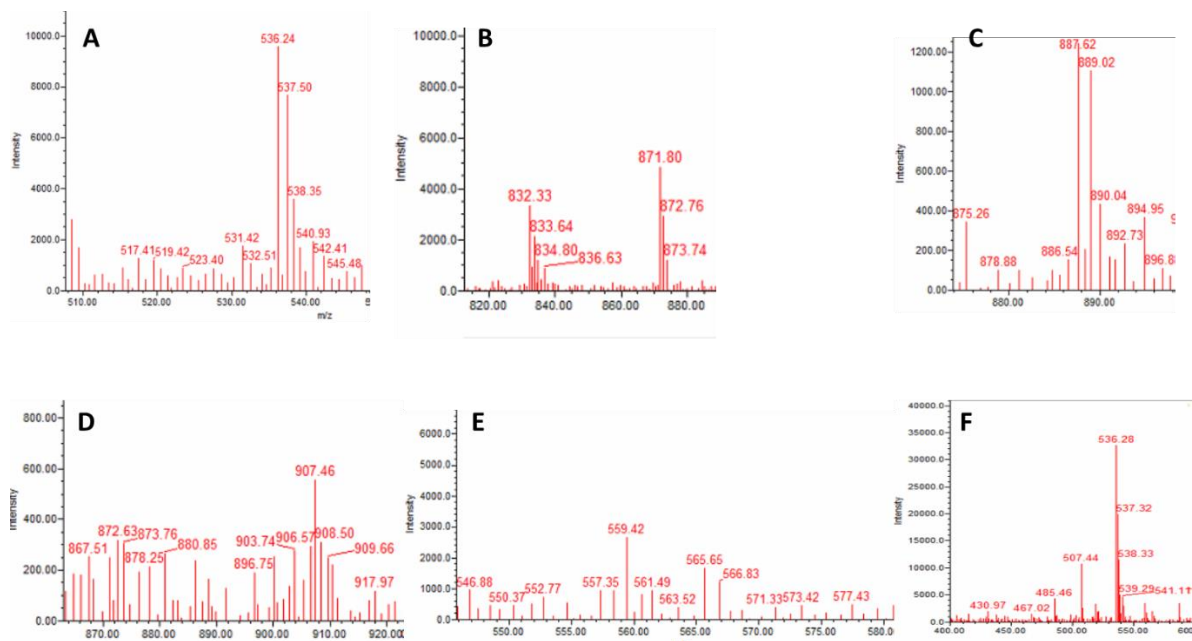
### Formulation of a Unique Mobile Phase for TLC-based Isolation of Polar and Nonpolar Pigments in *Acalypha wilkesiana* Müll.Arg. Leaves

Vishwajit Adiga,<sup>1</sup> Samanyu Chandra P,<sup>1</sup> Chinmaya Praveen,<sup>1</sup> Varnika Venkatesh Kikkeri,<sup>1</sup> Subhadip Senapati<sup>2,\*</sup>

<sup>1</sup>Samvida, Bengaluru, India 560019

<sup>2</sup>Prayoga Institute of Education Research, Bengaluru, India 560116

\*Corresponding author. Email: [subhadip.senapati@prayoga.org.in](mailto:subhadip.senapati@prayoga.org.in). ORCID 0000-0001-9071-1911



**Figure S1.** Mass spectra for separated plant pigments. A)  $\beta$ -carotene, B) pheophytin, C) chlorophyll-a, D) chlorophyll-b, E) xanthophylls, F) anthocyanins