

AMS35AA+cyclophosphamide

AMS35AA

Negative control

Cyclophosphamide

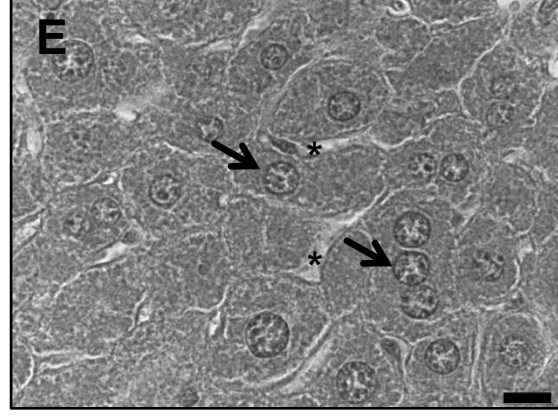
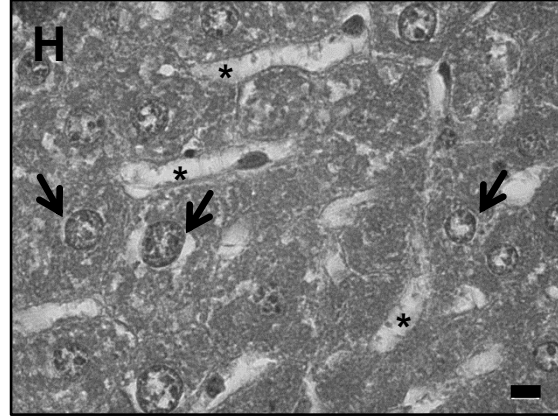
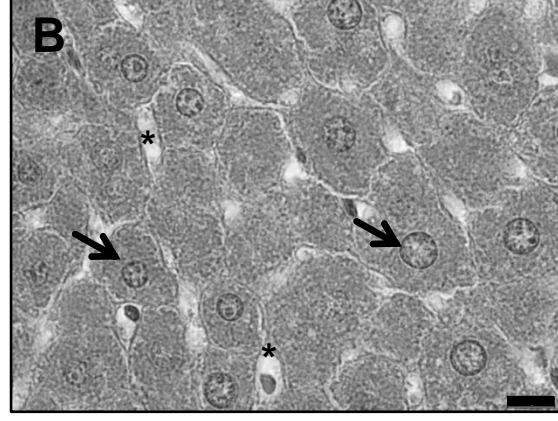
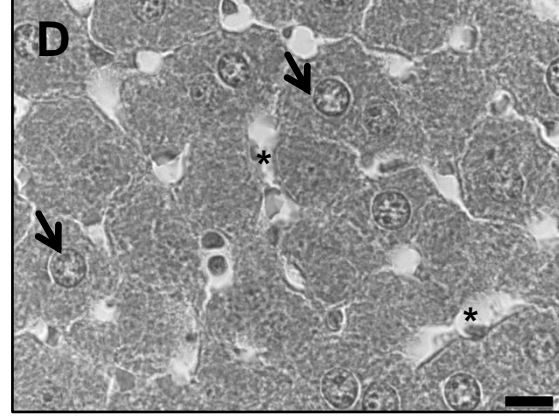
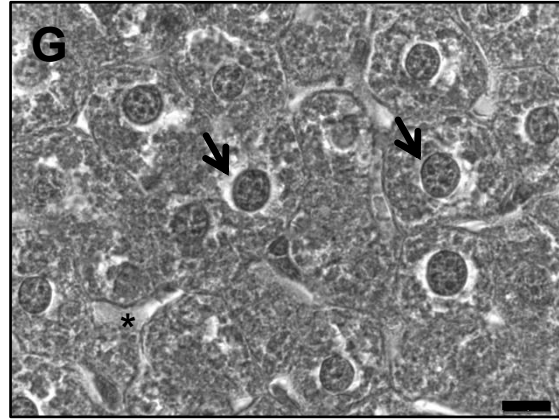
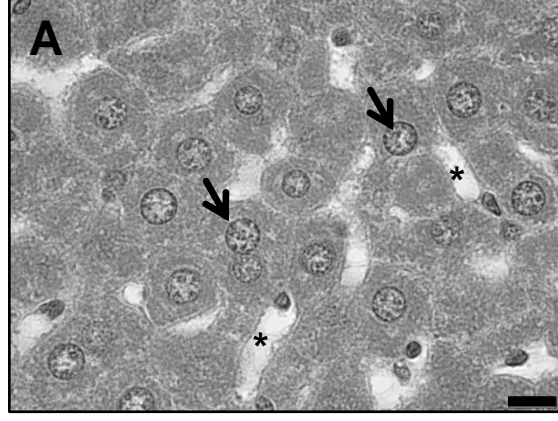
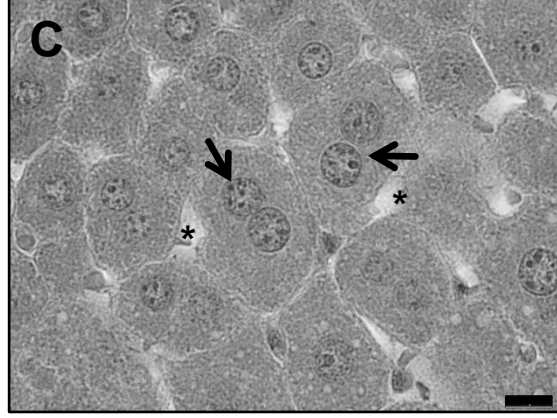
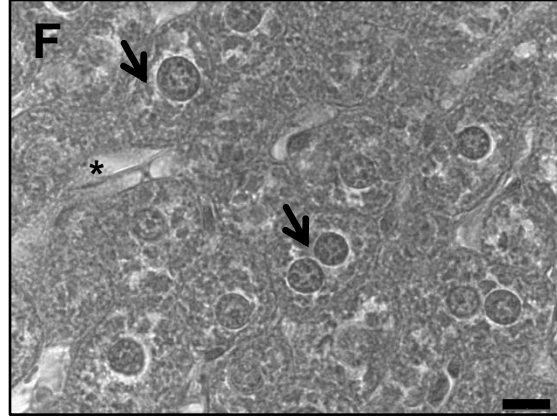


Figure 2. Light photomicrographs showing liver histology of control (A), cyclophosphamide (B), AMS35AA in 10 (C), 20 (D) and 40 mg/kg (E) and the combination of AMS35AA in 10, 20 and 40 mg/kg associate to cyclophosphamide (F, G, H, respectively) on the adult male mice liver. Observe the normal spherical nucleus (arrow) of the hepatocytes. A rarefaction of the cytoplasm is observed in F, G and H histological sections. The sinusoids and thinner sinusoidal wall (asterisks) can also be observed. Bar, 10 μ m.